

Data Protection

The basic requirement for video analysis is the compliance of project specific privacy regulations. These regulations are set project-related (regulations by German guidelines (FGSV)). An essential component is to avoid the recognizability of a single person .

As a result of the upper camera perspective and the reduced recording quality, identification of number plates or of single persons is impossible. The exceptions are persons directly looking into the camera.

Process of Survey and Evaluation

For video-based surveys the cameras are installed at lampposts or masts, so that the traffic is filmed from above. When fixing at masts gummed holders avoid scratches.

The evaluation is performed with trained staff at our office. There is no need to transfer data via internet.



Ingenieurgesellschaft mbH

Traffic Survey with Camera



Please contact us:

Dipl.-Ing. Ralf Losert
Dipl.-Geogr. Romy Waack
Karen Buschbeck, B.Eng.

Sedanstr. 48
30161 Hannover
Germany

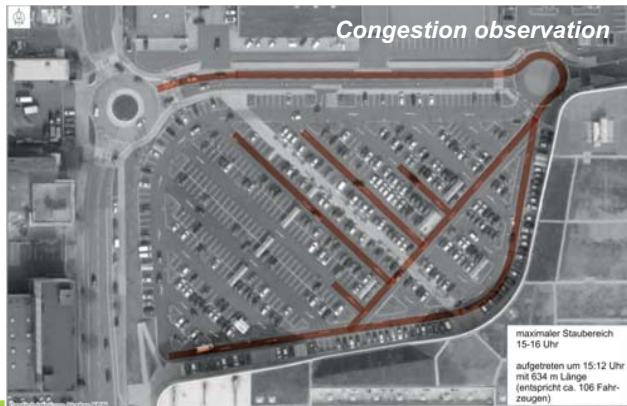
www.pgt-hannover.de

fon: +49 511-38 39 4-0
fax: +49 511-33 22 82

Traffic studies are an essential component in traffic management. The exact knowledge of turning movements and vehicle composition are important conditions for further projects.

Manual counts often can't compete with the high demands of our customers. Therefore the traffic survey with camera technology will enforce.

Examples



Traffic Volume Acquisition

Traffic counts can be done at cross sections, intersections and roundabouts. Thereby different vehicle types can be gathered:

- motorcycles, vehicles, buses, delivery vehicles < 3,5t, trucks > 3,5t, trucks and trailers
- cyclists
- pedestrians

Additionally observations and analyses of different situations are possible:

- crossing of pedestrians and cyclists
- congestion at intersections or in areas
- load of carparks
- through traffic (and rat running) in residential areas
- vehicle tracking

PGT.VE is able to provide simultaneous recordings of up to

Traffic Safety

By means of video analysis, remarks to dangerous situations in traffic can be shown. Analysis can be done on intersections as well as road sections that appear with disturbances of the different transport modes.

With the record in different perspectives it is possible to get the precise knowledge to the process of the disturbances. These results can be used to show suitable solutions.

A traffic survey with camera is suitable for...

- traffic counts
- congestion observation (and congestion running upstream)
- review of traffic safety
- vehicle tracking (bicycles & motor vehicles)
- bicycle traffic observation
- pedestrian traffic observation
- time interval measurement

Advantages compared to manual traffic counts

The recorded time is freely selectable from short-time records to one- or multi-day records. It is also possible to do a long-time record and analyse only few hours.

With a 24-hour traffic count it is possible to evaluate the nightly traffic for noise abatement planning.

Traffic surveys with cameras are suitable to measure intervals at traffic signal systems.

Qualified scientific staff sights the recordings to provide information about the level of service or disturbing factors.

It is also possible to review the recordings to get answers to additional questions or problems.